

Anti-INSR antibody (900-950) (STJ501473)

STJ501473

GENERAL INFORMATION

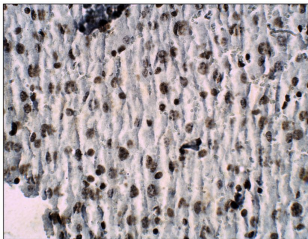
Product Type	Primary antibodies
Short Description	Rabbit polyclonal antibody anti-INSR (900-950) is suitable for use in ELISA, Immunoprecipitation and Western Blot research applications.
Applications	ELISA, IP, WB
Host/Source	Rabbit
Reactivity	Human, Mouse, Rat

PRODUCT PROPERTIES

Clonality	Polyclonal
Clone ID	
Concentration	0.55-0.75 µg/µl
Conjugation	Unconjugated
Purification	Affinity Purified
Dilution Range	WB: 1:500 ELISA: 1:10, 000 IP: 1:200
Formulation	
Isotype	IgG
Storage Instruction	Store at -20°C for long term storage. Avoid freeze-thaw cycles.

TARGET INFORMATION

Gene ID	3643
Gene Symbol	INSR
Uniprot ID	INSR_HUMAN
Immunogen	Synthetic peptide taken within amino acid region 900-950 on human Insulin receptor, transcript variant 2 protein. Cross reactive with both Insulin receptor alpha and insulin receptor beta variants.
Immunogen Region	900-950
Specificity	
Immunogen Sequence	



Immunohistochemistry of mouse liver with Anti-INSR primary antibody (STJ501473) at 1:100 dilution in Buffer. Section was treated with DAB and Haematoxylin stain. Magnification is at 40X.