

## Anti-INHA antibody (1-50) (STJ501455)

STJ501455

### GENERAL INFORMATION

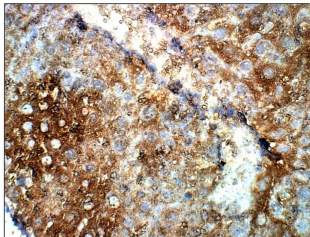
<b>Product Type</b>	Primary antibodies
<b>Short Description</b>	Rabbit polyclonal antibody anti-INHA (1-50) is suitable for use in Confocal Microscopy, ELISA, Immunocytochemistry, Immunofluorescence, Immunohistochemistry and Western Blot research applications.
<b>Applications</b>	CM, ELISA, ICC, IF, IHC, WB
<b>Host/Source</b>	Rabbit
<b>Reactivity</b>	Human, Monkey, Mouse, Rat

### PRODUCT PROPERTIES

<b>Clonality</b>	Polyclonal
<b>Clone ID</b>	
<b>Concentration</b>	0.50 µg/µl
<b>Conjugation</b>	Unconjugated
<b>Purification</b>	Affinity Purified
<b>Dilution Range</b>	WB: 1:500 DB: 1:20, 000 ELISA: 1:20, 000 IP: 1:200 IHC: 1:200 ICC: 1:200 IF: 1:200 CFM: 1:200
<b>Formulation</b>	
<b>Isotype</b>	IgG
<b>Storage</b>	Store at -20°C for long term storage. Avoid freeze-thaw cycles.
<b>Instruction</b>	

### TARGET INFORMATION

<b>Gene ID</b>	<a href="#">3623</a>
<b>Gene Symbol</b>	<a href="#">INHA</a>
<b>Uniprot ID</b>	<a href="#">INHA_HUMAN</a>
<b>Immunogen</b>	Synthetic peptide taken within amino acid region 1-50 on human alpha Inhibin.
<b>Immunogen Region</b>	1-50
<b>Specificity</b>	
<b>Immunogen Sequence</b>	



Immunohistochemistry of baboon liver with Anti-INHA primary antibody (STJ501455) at 1:50 dilution in Buffer. Section was treated with DAB and Haematoxylin stain. Magnification is at 40X.