

Anti-IL32 antibody (180-234) (STJ501446)

STJ501446

GENERAL INFORMATION

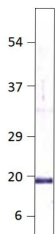
Product Type	Primary antibodies
Short Description	Rabbit polyclonal antibody anti-IL32 (180-234) is suitable for use in ELISA, Immunoprecipitation and Western Blot research applications.
Applications	ELISA, IP, WB
Host/Source	Rabbit
Reactivity	Human, Mouse, Rat

PRODUCT PROPERTIES

Clonality	Polyclonal
Clone ID	
Concentration	0.74-0.90 µg/µl
Conjugation	Unconjugated
Purification	Affinity Purified
Dilution Range	WB: 1:500 DB: 1:10, 000 ELISA: 1:10, 000 IP: 1:200
Formulation	
Isotype	IgG
Storage Instruction	Store at -20°C for long term storage. Avoid freeze-thaw cycles.

TARGET INFORMATION

Gene ID	9235
Gene Symbol	IL32
Uniprot ID	IL32_HUMAN
Immunogen	Synthetic peptide taken within amino acid region 180-234 on human Interleukin-32 (natural killer cells protein 4). The synthetic peptide was post-synthetically modified and conjugated to KLH to achieve desired antigenicity.
Immunogen Region	180-234
Specificity	
Immunogen Sequence	



Western blot with Anti-IL32 Antibody (STJ501446) with peptide on at 1:500 dilution in buffer.