

Anti-IL23A antibody (162-179) (STJ501441)

STJ501441

GENERAL INFORMATION

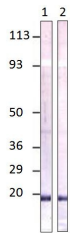
Product Type	Primary antibodies
Short Description	Rabbit polyclonal antibody anti-IL23A (162-179) is suitable for use in ELISA and Western Blot research applications.
Applications	ELISA, WB
Host/Source	Rabbit
Reactivity	Human, Mouse, Rat

PRODUCT PROPERTIES

Clonality	Polyclonal
Clone ID	
Concentration	0.65 µg/µl
Conjugation	Unconjugated
Purification	Affinity Purified
Dilution Range	WB: 1:250 DB: 1:10, 000 ELISA: 1:10, 000
Formulation	
Isotype	IgG
Storage Instruction	Store at -20°C for long term storage. Avoid freeze-thaw cycles.

TARGET INFORMATION

Gene ID	51561
Gene Symbol	IL23A
Uniprot ID	IL23A_HUMAN
Immunogen	Synthetic peptide corresponding to C terminal region amino acids 162-179 of Human IL23 P19. Peptide was covalently modified.
Immunogen Region	162-179
Specificity	This antibody does not cross react with other Interleukins or other proteins.
Immunogen Sequence	



Western blot with Anti-IL23A Antibody (STJ501441) with peptide on at 1:500 dilution in buffer.

This product is suitable for in-vitro studies under the RESEARCH USE ONLY [RUO] licence. This product must not be used as for diagnostic or other medical purposes.
St John's Laboratory Ltd, Knowledge Dock Business Centre, University Way, London, E16 2RD | Tel: 0208 223 3081