

Anti-IL17RC antibody (STJ501431)

STJ501431

GENERAL INFORMATION

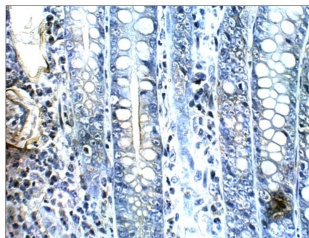
Product Type	Primary antibodies
Short Description	Rabbit polyclonal antibody anti-IL17RC is suitable for use in ELISA, Immunohistochemistry, Immunoprecipitation and Western Blot research applications.
Applications	ELISA, IHC, IP, WB
Host/Source	Rabbit
Reactivity	Human, Monkey

PRODUCT PROPERTIES

Clonality	Polyclonal
Clone ID	
Concentration	0.86-0.94 µg/µl
Conjugation	Unconjugated
Purification	Affinity Purified
Dilution Range	WB: 1:500 DB: 1:10, 000 ELISA: 1:10, 000 IP: 1:200 IHC: 1:100
Formulation	
Isotype	IgG
Storage	Store at -20°C for long term storage. Avoid freeze-thaw cycles.
Instruction	

TARGET INFORMATION

Gene ID	84818
Gene Symbol	IL17RC
Uniprot ID	I17RC_HUMAN
Immunogen	Synthetic peptide corresponding to IL17RC protein common to C1, C2, C5, C8, C9, C11, C12 isoforms.
Immunogen Region	
Specificity	
Immunogen Sequence	



Immunohistochemistry of baboon Colon with Anti-IL17RC primary antibody (STJ501431) at 1:100 dilution in Buffer. Section was treated with DAB and Haematoxylin stain. Magnification is at 40X.