

Anti-IL17RB antibody (300-400) (STJ501428)

STJ501428

GENERAL INFORMATION

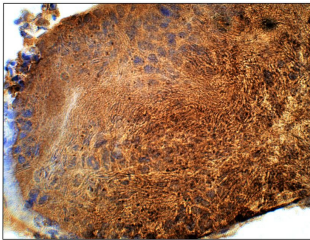
Product Type	Primary antibodies
Short Description	Rabbit polyclonal antibody anti-IL17RB (300-400) is suitable for use in ELISA, ihc, ip and Western Blot research applications.
Applications	ELISA, ihc, ip, WB
Host/Source	Rabbit
Reactivity	Human, Mouse, Rat

PRODUCT PROPERTIES

Clonality	Polyclonal
Clone ID	
Concentration	0.50 µg/µl
Conjugation	Unconjugated
Purification	Affinity Purified
Dilution Range	WB: 1:500 DB: 1:10, 000 ELISA: 1:10, 000 IP: 1:200 IHC: 1:50-1:150
Formulation	
Isotype	IgG
Storage Instruction	Store at -20°C for long term storage. Avoid freeze-thaw cycles.

TARGET INFORMATION

Gene ID	55540
Gene Symbol	IL17RB
Uniprot ID	I17RB_HUMAN
Immunogen	Synthetic peptide taken within amino acid region 300-400 on IL17RB protein.
Immunogen Region	300-400
Specificity	
Immunogen Sequence	



Immunohistochemistry of rat tissue with Anti-IL17RB primary antibody (STJ501428) at 1:100 dilution in Buffer. Section was treated with DAB and Haematoxylin stain. Magnification is at 40X.