

Anti-IFITM3 antibody (1-50) (STJ501404)

STJ501404

GENERAL INFORMATION

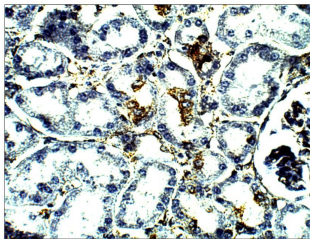
Product Type	Primary antibodies
Short Description	Rabbit polyclonal antibody anti-IFITM3 (1-50) is suitable for use in ELISA, Immunohistochemistry, Immunoprecipitation and Western Blot research applications.
Applications	ELISA, IHC, IP, WB
Host/Source	Rabbit
Reactivity	Human, Monkey

PRODUCT PROPERTIES

Clonality	Polyclonal
Clone ID	
Concentration	0.5 µg/µl
Conjugation	Unconjugated
Purification	Affinity Purified
Dilution Range	WB: 1:500 ELISA: 1:10, 000 IP: 1:150 IHC: 1:50-1:150
Formulation	
Isotype	IgG
Storage Instruction	Store at -20°C for long term storage. Avoid freeze-thaw cycles.

TARGET INFORMATION

Gene ID	10410
Gene Symbol	IFITM3
Uniprot ID	IFM3_HUMAN
Immunogen	Synthetic peptide taken within amino acid region 1-50 on human Interferon-induced transmembrane protein 3.
Immunogen Region	1-50
Specificity	
Immunogen Sequence	



Immunohistochemistry of baboon kidney with Anti-IFITM3 primary antibody (STJ501404) at 1:50 dilution in Buffer. Section was treated with DAB and Haematoxylin stain. Magnification is at 40X.