

## Anti-IDO2 antibody (370-420) (STJ501392)

STJ501392

### GENERAL INFORMATION

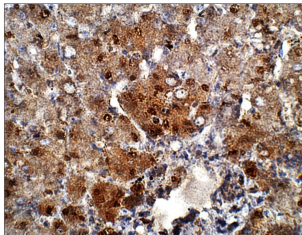
<b>Product Type</b>	Primary antibodies
<b>Short Description</b>	Rabbit polyclonal antibody anti-IDO2 (370-420) is suitable for use in ELISA, Immunohistochemistry, Immunoprecipitation and Western Blot research applications.
<b>Applications</b>	ELISA, IHC, IP, WB
<b>Host/Source</b>	Rabbit
<b>Reactivity</b>	Human, Monkey

### PRODUCT PROPERTIES

<b>Clonality</b>	Polyclonal
<b>Clone ID</b>	
<b>Concentration</b>	0.5-1.5 µg/µl
<b>Conjugation</b>	Unconjugated
<b>Purification</b>	Affinity Purified
<b>Dilution Range</b>	WB: 1:2, 500-1:5, 000 ELISA: 1:50, 000 IP: 1:200 IHC: 1:50-1:250
<b>Formulation</b>	
<b>Isotype</b>	IgG
<b>Storage Instruction</b>	Store at -20°C for long term storage. Avoid freeze-thaw cycles.

### TARGET INFORMATION

<b>Gene ID</b>	<a href="#">169355</a>
<b>Gene Symbol</b>	<a href="#">IDO2</a>
<b>Uniprot ID</b>	<a href="#">I23O2_HUMAN</a>
<b>Immunogen</b>	Synthetic peptide taken within amino acid region 370-420 on human Indoleamine 2, 3-dioxygenase 2 protein.
<b>Immunogen Region</b>	370-420
<b>Specificity</b>	
<b>Immunogen Sequence</b>	



Immunohistochemistry Liver with Anti-IDO2 Antibody (STJ501392) at 1:50 dilution in Buffer. DAB (brown) staining and Haematoxylin QS (blue) counterstain. 40X (right) magnification. FFPE section.