

Anti-HYOU1 antibody (950-999) (STJ501377)

STJ501377

GENERAL INFORMATION

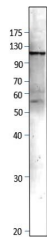
Product Type	Primary antibodies
Short Description	Rabbit polyclonal antibody anti-HYOU1 (950-999) is suitable for use in ELISA, Immunohistochemistry, Immunoprecipitation and Western Blot research applications.
Applications	ELISA, IHC, IP, WB
Host/Source	Rabbit
Reactivity	Human, Monkey, Rat

PRODUCT PROPERTIES

Clonality	Polyclonal
Clone ID	
Concentration	0.5 µg/µl
Conjugation	Unconjugated
Purification	Affinity Purified
Dilution Range	WB: 1:500 ELISA: 1:10, 000 IP: 1:200 IHC: 1:50-1:100
Formulation	
Isotype	IgG
Storage Instruction	Store at -20°C for long term storage. Avoid freeze-thaw cycles.

TARGET INFORMATION

Gene ID	10525
Gene Symbol	HYOU1
Uniprot ID	HYOU1_HUMAN
Immunogen	Synthetic peptide taken within amino acid region 950-999 on human Hypoxia up regulated 1.
Immunogen Region	950-999
Specificity	
Immunogen Sequence	



Western blot with Anti-HYOU1 Antibody (STJ501377) of rat testis at 1:500 dilution in buffer.