

Anti-HMGB1 antibody (150-200) (STJ501358)

STJ501358

GENERAL INFORMATION

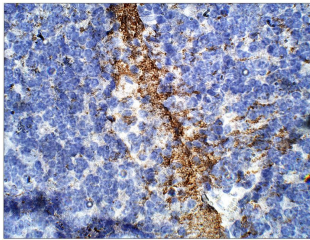
Product Type	Primary antibodies
Short Description	Rabbit polyclonal antibody anti-HMGB1 (150-200) is suitable for use in ELISA, Immunohistochemistry, Immunoprecipitation and Western Blot research applications.
Applications	ELISA, IHC, IP, WB
Host/Source	Rabbit
Reactivity	Human, Mouse, Rat

PRODUCT PROPERTIES

Clonality	Polyclonal
Clone ID	
Concentration	0.5-1.5 µg/µl
Conjugation	Unconjugated
Purification	Affinity Purified
Dilution Range	WB: 1:2, 500-1:5, 000 ELISA: 1:50, 000 IP: 1:200 IHC: 1:50-1:150
Formulation	
Isotype	IgG
Storage Instruction	Store at -20°C for long term storage. Avoid freeze-thaw cycles.

TARGET INFORMATION

Gene ID	3146
Gene Symbol	HMGB1
Uniprot ID	HMGB1_HUMAN
Immunogen	Synthetic peptide taken within amino acid region 150-200 on human High mobility group protein B1 protein.
Immunogen Region	150-200
Specificity	
Immunogen Sequence	



Immunohistochemistry of mouse brain with Anti-HMGB1 primary antibody (STJ501358) at 1:50 dilution in Buffer. Section was treated with DAB and Haematoxylin stain. Magnification is at 40X.