

Anti-HIF-1-Alpha isoform 1 antibody (790-826) (STJ501334)

STJ501334

GENERAL INFORMATION

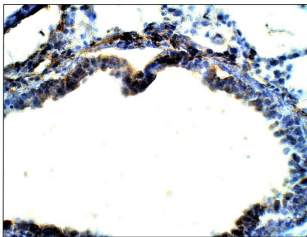
Product Type	Primary antibodies
Short Description	Rabbit polyclonal antibody anti-HIF-1-Alpha isoform 1 (790-826) is suitable for use in ELISA, Immunoprecipitation and Western Blot research applications.
Applications	ELISA, IP, WB
Host/Source	Rabbit
Reactivity	Human, Mouse, Rat

PRODUCT PROPERTIES

Clonality	Polyclonal
Clone ID	
Concentration	0.55-0.57 µg/µl
Conjugation	Unconjugated
Purification	Affinity Purified
Dilution Range	WB: 1:500 ELISA: 1:10, 000 IP: 1:200 IHC: 1:50-1:150
Formulation	
Isotype	IgG
Storage	Store at -20°C for long term storage. Avoid freeze-thaw cycles.
Instruction	

TARGET INFORMATION

Gene ID	3091
Gene Symbol	HIF1A
Uniprot ID	HIF1A_HUMAN
Immunogen	Synthetic peptide taken within amino acid region 790-826 on human HIF1A protein.
Immunogen	790-826
Region	
Specificity	
Immunogen	
Sequence	



Immunohistochemistry of mouse lung with Anti-HIF-1-Alpha isoform 1 primary antibody (STJ501334) at 1:50 dilution in Buffer. Section was treated with DAB and Haematoxylin stain. Magnification is at 40X.