

Anti-ERBB2 antibody (130-180) (STJ501322)

STJ501322

GENERAL INFORMATION

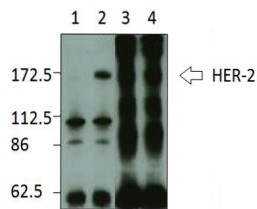
Product Type	Primary antibodies
Short Description	Rabbit polyclonal antibody anti-ERBB2 (130-180) is suitable for use in ELISA, Immunoprecipitation and Western Blot research applications.
Applications	ELISA, IP, WB
Host/Source	Rabbit
Reactivity	Human, Mouse, Rat

PRODUCT PROPERTIES

Clonality	Polyclonal
Clone ID	
Concentration	0.65-1.25 µg/µl
Conjugation	Unconjugated
Purification	Affinity Purified
Dilution Range	WB: 1:500 DB: 1:10, 000 ELISA: 1:10, 000 IP: 1:200
Formulation	
Isotype	IgG
Storage Instruction	Store at -20°C for long term storage. Avoid freeze-thaw cycles.

TARGET INFORMATION

Gene ID	2064
Gene Symbol	ERBB2
Uniprot ID	ERBB2_HUMAN
Immunogen	Synthetic peptide taken within amino acid region 130-180 receptor tyrosine-protein kinase erbB-2 protein.
Immunogen Region	130-180
Specificity	
Immunogen Sequence	



Lane 1 & 3) Immunoprecipitation and Lane 4) Western Blot of Herceptin-2 with Anti-ERBB2 Antibody (STJ501322).