

Anti-HAND2 antibody (1-100) (STJ501310)

STJ501310

GENERAL INFORMATION

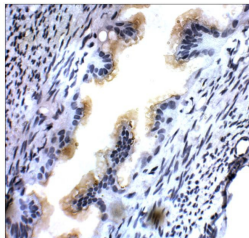
Product Type	Primary antibodies
Short Description	Rabbit polyclonal antibody anti-HAND2 (1-100) is suitable for use in ELISA, Immunohistochemistry, Immunoprecipitation and Western Blot research applications.
Applications	ELISA, IHC, IP, WB
Host/Source	Rabbit
Reactivity	Human, Monkey, Mouse, Rat

PRODUCT PROPERTIES

Clonality	Polyclonal
Clone ID	
Concentration	0.5-.6 µg/µl
Conjugation	Unconjugated
Purification	Affinity Purified
Dilution Range	WB: 1:500 DB: 1:10, 000 ELISA: 1:10, 000 IP: 1:200 IHC: 1:100
Formulation	
Isotype	IgG
Storage	Store at -20°C for long term storage. Avoid freeze-thaw cycles.
Instruction	

TARGET INFORMATION

Gene ID	64637
Gene Symbol	Hand2
Uniprot ID	HAND2_RAT
Immunogen	Synthetic peptide taken within amino acid region 1-100 on Human HAND2 protein.
Immunogen Region	1-100
Specificity	
Immunogen Sequence	



Immunohistochemistry of rat Ovary with Anti-HAND2 primary antibody (STJ501310) at 1:100 dilution in Buffer. Section was treated with DAB and Haematoxylin stain. Magnification is at 40X.