

## Anti-GTP cyclohydrolase 1 antibody (25-75) (STJ501305)

STJ501305

### GENERAL INFORMATION

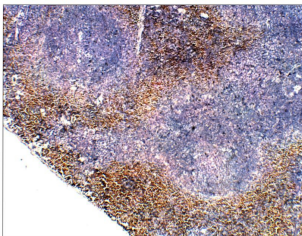
<b>Product Type</b>	Primary antibodies
<b>Short Description</b>	Rabbit polyclonal antibody anti-GTP cyclohydrolase 1 (25-75) is suitable for use in ELISA, Immunohistochemistry, Immunoprecipitation and Western Blot research applications.
<b>Applications</b>	ELISA, IHC, IP, WB
<b>Host/Source</b>	Rabbit
<b>Reactivity</b>	Mouse, Rat

### PRODUCT PROPERTIES

<b>Clonality</b>	Polyclonal
<b>Clone ID</b>	
<b>Concentration</b>	0.73-1.01 µg/µl
<b>Conjugation</b>	Unconjugated
<b>Purification</b>	Affinity Purified
<b>Dilution Range</b>	WB: 1:500-1:750 DB: 1:20, 000 ELISA: 1:20, 000 IP: 1:200 IHC: 1:100
<b>Formulation</b>	
<b>Isotype</b>	IgG
<b>Storage</b>	Store at -20°C for long term storage. Avoid freeze-thaw cycles.
<b>Instruction</b>	

### TARGET INFORMATION

<b>Gene ID</b>	14528
<b>Gene Symbol</b>	Gch1
<b>Uniprot ID</b>	GCH1_MOUSE
<b>Immunogen</b>	Synthetic peptide taken within amino acid region 25-75 on mouse GTPCHI protein.
<b>Immunogen Region</b>	25-75
<b>Specificity</b>	
<b>Immunogen Sequence</b>	



Immunohistochemistry of mouse spleen with Anti-GTP cyclohydrolase 1 primary antibody (STJ501305) at 1:100 dilution in buffer. Section was treated with DAB and Haematoxylin stain. Magnification is at 10X.