

## Anti-GPS2 antibody (250-300) (STJ501283)

STJ501283

### GENERAL INFORMATION

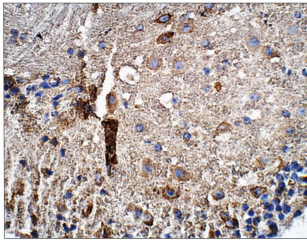
<b>Product Type</b>	Primary antibodies
<b>Short Description</b>	Rabbit polyclonal antibody anti-GPS2 (250-300) is suitable for use in ELISA, Immunohistochemistry, Immunoprecipitation and Western Blot research applications.
<b>Applications</b>	ELISA, IHC, IP, WB
<b>Host/Source</b>	Rabbit
<b>Reactivity</b>	Human, Mouse, Rat

### PRODUCT PROPERTIES

<b>Clonality</b>	Polyclonal
<b>Clone ID</b>	
<b>Concentration</b>	0.5-1.5 µg/µl
<b>Conjugation</b>	Unconjugated
<b>Purification</b>	Affinity Purified
<b>Dilution Range</b>	WB: 1:2, 500-1:5, 000 ELISA: 1:50, 000 IP: 1:200 IHC: 1:250
<b>Formulation</b>	
<b>Isotype</b>	IgG
<b>Storage Instruction</b>	Store at -20°C for long term storage. Avoid freeze-thaw cycles.

### TARGET INFORMATION

<b>Gene ID</b>	2874
<b>Gene Symbol</b>	GPS2
<b>Uniprot ID</b>	GPS2_HUMAN
<b>Immunogen</b>	Synthetic peptide taken within amino acid region 250-300 on human G protein pathway suppressor 2 protein.
<b>Immunogen Region</b>	250-300
<b>Specificity</b>	
<b>Immunogen Sequence</b>	



Immunohistochemistry of mouse tissue with Anti-GPS2 primary antibody (STJ501283) at 1:50 dilution in Buffer. Section was treated with DAB and Haematoxylin stain.