

Anti-ADGRF3 antibody (100-150) (STJ501280)

STJ501280

GENERAL INFORMATION

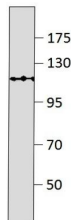
Product Type	Primary antibodies
Short Description	Rabbit polyclonal antibody anti-ADGRF3 (100-150) is suitable for use in ELISA, Immunohistochemistry, Immunoprecipitation and Western Blot research applications.
Applications	ELISA, IHC, IP, WB
Host/Source	Rabbit
Reactivity	Human, Monkey

PRODUCT PROPERTIES

Clonality	Polyclonal
Clone ID	
Concentration	0.55-0.75 µg/µl
Conjugation	Unconjugated
Purification	Affinity Purified
Dilution Range	WB: 1:500 DB: 1:10, 000 ELISA: 1:10, 000 IP: 1:150 IHC: 1:50-1:100
Formulation	
Isotype	IgG
Storage	Store at -20°C for long term storage. Avoid freeze-thaw cycles.
Instruction	

TARGET INFORMATION

Gene ID	165082
Gene Symbol	ADGRF3
Uniprot ID	AGRF3_HUMAN
Immunogen	Synthetic peptide taken within amino acid region 100-150 on human GPR113 protein.
Immunogen Region	100-150
Specificity	
Immunogen Sequence	



Western blot from 10% SDS gel with Anti-ADGRF3 Antibody (STJ501280) and peptide. Antibody at 1:500 dilution in buffer.