

Anti-GAPDH antibody (75-150) (STJ501277)

STJ501277

GENERAL INFORMATION

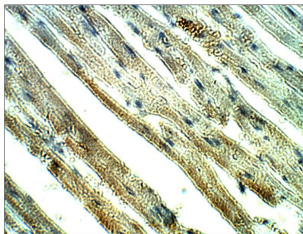
Product Type	Primary antibodies
Short Description	Rabbit polyclonal antibody anti-GAPDH (75-150) is suitable for use in ELISA, Immunohistochemistry, Immunoprecipitation and Western Blot research applications.
Applications	ELISA, IHC, IP, WB
Host/Source	Rabbit
Reactivity	Human, Mouse, Rat

PRODUCT PROPERTIES

Clonality	Polyclonal
Clone ID	
Concentration	0.64-0.72 µg/µl
Conjugation	Unconjugated
Purification	Affinity Purified
Dilution Range	WB: 1:500 DB: 1:10, 000 ELISA: 1:10, 000 IP: 1:200 IHC: 1:100
Formulation	
Isotype	IgG
Storage	Store at -20°C for long term storage. Avoid freeze-thaw cycles.
Instruction	

TARGET INFORMATION

Gene ID	14433
Gene Symbol	Gapdh
Uniprot ID	G3P_MOUSE
Immunogen	Synthetic peptide taken within amino acid region 50-100 on mouse Glyceraldehyde-3-phosphate dehydrogenase protein.
Immunogen Region	75-150
Specificity	
Immunogen Sequence	



Immunohistochemistry of mouse tissue with Anti-GAPDH primary antibody (STJ501277) at 1:100 dilution in Buffer. Section was treated with DAB and Haematoxylin stain. Magnification is at 40X.