

Anti-NPBWR2 antibody (280-333) (STJ501271)

STJ501271

GENERAL INFORMATION

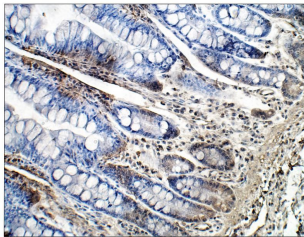
Product Type	Primary antibodies
Short Description	Rabbit polyclonal antibody anti-NPBWR2 (280-333) is suitable for use in ELISA, Immunohistochemistry, Immunoprecipitation and Western Blot research applications.
Applications	ELISA, IHC, IP, WB
Host/Source	Rabbit
Reactivity	Human, Monkey

PRODUCT PROPERTIES

Clonality	Polyclonal
Clone ID	
Concentration	0.5 µg/µl
Conjugation	Unconjugated
Purification	Affinity Purified
Dilution Range	WB: 1:500 ELISA: 1:10, 000 IP: 1:150 IHC: 1:50-1:100
Formulation	
Isotype	IgG
Storage Instruction	Store at -20°C for long term storage. Avoid freeze-thaw cycles.

TARGET INFORMATION

Gene ID	2832
Gene Symbol	NPBWR2
Uniprot ID	NPBW2_HUMAN
Immunogen	Synthetic peptide taken within amino acid region 280-333 on human Neuropeptides B/W receptor type 2 protein.
Immunogen Region	280-333
Specificity	
Immunogen Sequence	



Immunohistochemistry with Anti-NPBWR2 Antibody (STJ501271) at 1:50 dilution in Buffer. DAB (brown) staining and Haematoxylin QS (blue) counterstain. 20X magnification on Leica DM4000. FFPE section.