

Anti-ADGRG1 antibody (Extracellular Loop) (STJ501256)

STJ501256

GENERAL INFORMATION

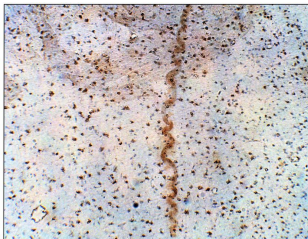
Product Type	Primary antibodies
Short Description	Rabbit polyclonal antibody anti-ADGRG1 (Extracellular Loop) is suitable for use in ELISA, Immunohistochemistry, Immunoprecipitation and Western Blot research applications.
Applications	ELISA, IHC, IP, WB
Host/Source	Rabbit
Reactivity	Human, Monkey, Mouse, Rat

PRODUCT PROPERTIES

Clonality	Polyclonal
Clone ID	
Concentration	0.55-0.65 µg/µl
Conjugation	Unconjugated
Purification	Affinity Purified
Dilution Range	WB: 1:500-1:750 DB: 1:20, 000-1:50, 000 ELISA: 1:20, 000-1:50, 000 IP: 1:200 IHC: 1:100
Formulation	
Isotype	IgG
Storage	Store at -20°C for long term storage. Avoid freeze-thaw cycles.
Instruction	

TARGET INFORMATION

Gene ID	9289
Gene Symbol	ADGRG1
Uniprot ID	AGR1_HUMAN
Immunogen	Synthetic peptide taken from large extracellular loop of the human GPCR56 protein. Peptide was conjugated to Keyhole Limpet Haemocyanin (KLH).
Immunogen Region	Extracellular Loop
Specificity	
Immunogen Sequence	



Immunohistochemistry with Anti-ADGRG1 Antibody (STJ501256) of Baboon Brain at 1:50 dilution in buffer. DAB (brown) staining and Haematoxylin QS (blue) counterstain. Magnification is 10X.

This product is suitable for in-vitro studies under the RESEARCH USE ONLY [RUO] licence. This product must not be used as for diagnostic or other medical purposes.
St John's Laboratory Ltd, Knowledge Dock Business Centre, University Way, London, E16 2RD | Tel: 0208 223 3081