

Anti-GOLGA3 antibody (1400-1450) (STJ501238)

STJ501238

GENERAL INFORMATION

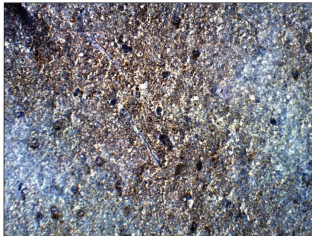
Product Type	Primary antibodies
Short Description	Rabbit polyclonal antibody anti-GOLGA3 (1400-1450) is suitable for use in ELISA, Immunohistochemistry, Immunoprecipitation and Western Blot research applications.
Applications	ELISA, IHC, IP, WB
Host/Source	Rabbit
Reactivity	Human, Monkey, Rat

PRODUCT PROPERTIES

Clonality	Polyclonal
Clone ID	
Concentration	0.55-0.75 µg/µl
Conjugation	Unconjugated
Purification	Affinity Purified
Dilution Range	WB: 1:500 DB: 1:10, 000 ELISA: 1:10, 000 IP: 1:150 IHC: 1:50-1:150
Formulation	
Isotype	IgG
Storage	Store at -20°C for long term storage. Avoid freeze-thaw cycles.
Instruction	

TARGET INFORMATION

Gene ID	2802
Gene Symbol	GOLGA3
Uniprot ID	GOGA3_HUMAN
Immunogen	Synthetic peptide taken within amino acid region 1400-1450 on human Golgin subfamily A member 3 isoform 1 protein.
Immunogen Region	1400-1450
Specificity	
Immunogen Sequence	



Immunohistochemistry of baboon brain with Anti-GOLGA3 primary antibody (STJ501238) at 1:50 dilution in Buffer. Section was treated with DAB and Haematoxylin stain. Magnification is at 40X.

This product is suitable for in-vitro studies under the RESEARCH USE ONLY [RUO] licence. This product must not be used as for diagnostic or other medical purposes.
St John's Laboratory Ltd, Knowledge Dock Business Centre, University Way, London, E16 2RD | Tel: 0208 223 3081