

Anti-SLC2A9 antibody (50-570) (STJ501229)

STJ501229

GENERAL INFORMATION

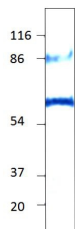
| | |
|--------------------------|---|
| Product Type | Primary antibodies |
| Short Description | Rabbit polyclonal antibody anti-SLC2A9 (50-570) is suitable for use in ELISA, Immunoprecipitation and Western Blot research applications. |
| Applications | ELISA, IP, WB |
| Host/Source | Rabbit |
| Reactivity | Human |

PRODUCT PROPERTIES

| | |
|----------------------------|---|
| Clonality | Polyclonal |
| Clone ID | |
| Concentration | 0.5 µg/µl |
| Conjugation | Unconjugated |
| Purification | Affinity Purified |
| Dilution Range | WB: 1:500-1:750 DB: 1:4, 500 ELISA: 1:4, 500 IP: 1:200 |
| Formulation | |
| Isotype | IgG |
| Storage Instruction | Store at -20°C for long term storage. Avoid freeze-thaw cycles. |

TARGET INFORMATION

| | |
|---------------------------|--|
| Gene ID | 56606 |
| Gene Symbol | SLC2A9 |
| Uniprot ID | GTR9_HUMAN |
| Immunogen | Synthetic peptide taken within amino acid region 50-570 on Glut 9 protein. |
| Immunogen Region | 50-570 |
| Specificity | |
| Immunogen Sequence | |



Western blot with Anti-SLC2A9 Antibody (STJ501229) with peptide on at 1:500 dilution in buffer.

This product is suitable for in-vitro studies under the RESEARCH USE ONLY [RUO] licence. This product must not be used as for diagnostic or other medical purposes.
St John's Laboratory Ltd, Knowledge Dock Business Centre, University Way, London, E16 2RD | Tel: 0208 223 3081