

Anti-SLC2A8 antibody (400-500) (STJ501226)

STJ501226

GENERAL INFORMATION

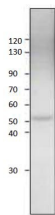
Product Type	Primary antibodies
Short Description	Rabbit polyclonal antibody anti-SLC2A8 (400-500) is suitable for use in ELISA and Western Blot research applications.
Applications	ELISA, WB
Host/Source	Rabbit
Reactivity	Human, Mouse, Rat

PRODUCT PROPERTIES

Clonality	Polyclonal
Clone ID	
Concentration	0.56-0.70 µg/µl
Conjugation	Unconjugated
Purification	Affinity Purified
Dilution Range	WB: 1:500 DB: 1:10, 000 ELISA: 1:10, 000
Formulation	
Isotype	IgG
Storage Instruction	Store at -20°C for long term storage. Avoid freeze-thaw cycles.

TARGET INFORMATION

Gene ID	29988
Gene Symbol	SLC2A8
Uniprot ID	GTR8_HUMAN
Immunogen	Synthetic peptide taken within amino acid region 400-500 on GLUT8 protein.
Immunogen Region	400-500
Specificity	
Immunogen Sequence	



Western blot with Anti-SLC2A8 Antibody (STJ501226) at 1:500 dilution in buffer.