

Anti-SLC2A5 antibody (490-500) (STJ501217)

STJ501217

GENERAL INFORMATION

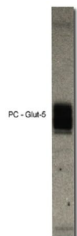
Product Type	Primary antibodies
Short Description	Rabbit polyclonal antibody anti-SLC2A5 (490-500) is suitable for use in ELISA, Immunoprecipitation and Western Blot research applications.
Applications	ELISA, IP, WB
Host/Source	Rabbit
Reactivity	Horse

PRODUCT PROPERTIES

Clonality	Polyclonal
Clone ID	
Concentration	0.7 µg/µl
Conjugation	Unconjugated
Purification	Affinity Purified
Dilution Range	WB: 1:1, 000 DB: 1:4, 000 ELISA: 1:4, 000 IP: 1:200 IHC: 1:50-1:200
Formulation	
Isotype	IgG
Storage Instruction	Store at -20°C for long term storage. Avoid freeze-thaw cycles.

TARGET INFORMATION

Gene ID	6518
Gene Symbol	SLC2A5
Uniprot ID	GTR5_HUMAN
Immunogen	Synthetic peptide corresponding to C terminal amino acids 490-500 of Human Glucose Transporter 5 GLUT5. A cysteine residue was included at the N-terminus of the peptide to accommodate KLH conjugation.
Immunogen Region	490-500
Specificity	Does not react with GLUT1, 2, 3, or 4 from human, mouse or rat.
Immunogen Sequence	



Western blot with Anti-SLC2A5 Antibody (STJ501217) with peptide on at 1:500 dilution in buffer.