

Anti-GLUT3 antibody (400-493) (STJ501211)

STJ501211

GENERAL INFORMATION

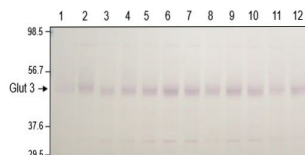
Product Type	Primary antibodies
Short Description	Rabbit polyclonal antibody anti-GLUT3 (400-493) is suitable for use in Confocal Microscopy, ELISA, Immunocytochemistry, Immunofluorescence, Immunohistochemistry, Immunoprecipitation and Western Blot research applications.
Applications	CM, ELISA, ICC, IF, IHC, IP, WB
Host/Source	Rabbit
Reactivity	Human, Mouse, Rat

PRODUCT PROPERTIES

Clonality	Polyclonal
Clone ID	
Concentration	0.68 µg/µl
Conjugation	Unconjugated
Purification	Affinity Purified
Dilution Range	WB: 1:8, 000 DB: 1:25, 000 ELISA: 1:25, 000 IP: 1:200 IHC: 1:250 ICC: 1:250 IF: 1:250 CFM: 1:250
Formulation	
Isotype	IgG
Storage	Store at -20°C for long term storage. Avoid freeze-thaw cycles.
Instruction	

TARGET INFORMATION

Gene ID	
Gene Symbol	
Uniprot ID	
Immunogen	Synthetic peptide taken within amino acid region 400-493 on mouse SLC2A3 protein.
Immunogen Region	400-493
Specificity	
Immunogen Sequence	



Lane: 1, 4, 7 and 10 - Sal 3 month
Lane: 2, 5, 8 and 11 - Glu 3 month
Lane: 3, 6, 9, and 12 - CB 3 months
Last Lane: MWM (broad range markers)

Lane: 1, 4, 7 and 10 - Sal 3 month, Lane: 2, 5, 8 and 11 - Glu 3 month, Lane: 3, 6, 9 and 12 - CB 3 months, Last Lane: MWM (broad range markers), Cortical extracts (10 µg total protein/lane) on 10% SDS-PAGE gel. Primary antibody: Glucose transporter type 3 (STJ501211) diluted 1:2000 in buffer, incubation in primary antibody for 170 minutes at RT, washes 3x10 minutes in TBST. Secondary antibody: Alkaline phosphatase conjugated goat anti-rabbit IgG (1:5000)