

Anti-GLUT12 antibody (C-Term) (STJ501202)

STJ501202

GENERAL INFORMATION

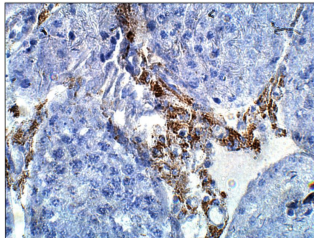
| | |
|--------------------------|--|
| Product Type | Primary antibodies |
| Short Description | Rabbit polyclonal antibody anti-GLUT12 (C-Term) is suitable for use in ELISA, Immunocytochemistry, Immunofluorescence, Immunoprecipitation, Dot Blot and Western Blot research applications. |
| Applications | ELISA, ICC, IF, IP, DB, WB |
| Host/Source | Rabbit |
| Reactivity | Human, Mouse, Rat |

PRODUCT PROPERTIES

| | |
|-----------------------|---|
| Clonality | Polyclonal |
| Clone ID | |
| Concentration | 0.5 µg/µl |
| Conjugation | Unconjugated |
| Purification | Affinity Purified |
| Dilution Range | WB: 1:500 DB: 1:4500 ELISA: 1:4500 IP: 1:200 ICC: 1:200 |
| Formulation | |
| Isotype | IgG |
| Storage | Store at -20°C for long term storage. Avoid freeze-thaw cycles. |
| Instruction | |

TARGET INFORMATION

| | |
|---------------------------|--|
| Gene ID | |
| Gene Symbol | |
| Uniprot ID | |
| Immunogen | Synthetic peptide from the C-terminus of Rat GLUT12. |
| Immunogen Region | C-Term |
| Specificity | This antibody has been fully characterized for cross reactivity within the GLUT family and with other cellular proteins. |
| Immunogen Sequence | |



Immunohistochemistry of rat tissue with Anti-GLUT12 primary antibody (STJ501202) at 1:50 dilution in Buffer. Section was treated with DAB and Haematoxylin stain. Magnification is at 40X.