

## Anti-SLC2A1 antibody (478-492) (STJ501193)

STJ501193

### GENERAL INFORMATION

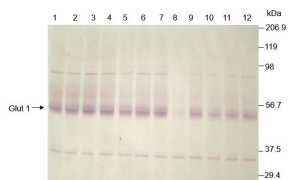
<b>Product Type</b>	Primary antibodies
<b>Short Description</b>	Rabbit polyclonal antibody anti-SLC2A1 (478-492) is suitable for use in Confocal Microscopy, ELISA, Immunocytochemistry, Immunofluorescence, Immunohistochemistry, Immunoprecipitation and Western Blot research applications.
<b>Applications</b>	CM, ELISA, ICC, IF, IHC, IP, WB
<b>Host/Source</b>	Rabbit
<b>Reactivity</b>	Human, Mouse, Rat

### PRODUCT PROPERTIES

<b>Clonality</b>	Polyclonal
<b>Clone ID</b>	
<b>Concentration</b>	0.5 µg/µl
<b>Conjugation</b>	Unconjugated
<b>Purification</b>	Affinity Purified
<b>Dilution</b>	WB: 1:5, 000
<b>Range</b>	ELISA: 1:12, 000 IP: 1:200 IHC: 1:50-1:200 ICC: 1:50-1:200 IF: 1:50-1:200
<b>Formulation</b>	
<b>Isotype</b>	IgG
<b>Storage</b>	Store at -20°C for long term storage. Avoid freeze-thaw cycles.
<b>Instruction</b>	

### TARGET INFORMATION

<b>Gene ID</b>	6513
<b>Gene Symbol</b>	SLC2A1
<b>Uniprot ID</b>	GTR1_HUMAN
<b>Immunogen</b>	Synthetic peptide conjugated to KLH, corresponding to amino acids 478-492 of Human Glucose Transporter GLUT1. Peptide was covalently modified.
<b>Immunogen Region</b>	478-492
<b>Specificity</b>	
<b>Immunogen Sequence</b>	



Lane: 1, 4, 7 and 10 control 21 month  
Lane: 2, 5, 8 and 11 Saline 21 month  
Lane: 3, 6, 9 and 12 CG 21 months  
Last Lane: MWM (Bio Rad broad range markers)

Western blot with Anti-SLC2A1 Antibody (STJ501193) of Rat brain at 1:2000 dilution in buffer on a 10% SDS gel.

This product is suitable for in-vitro studies under the RESEARCH USE ONLY [RUO] licence. This product must not be used as for diagnostic or other medical purposes.  
St John's Laboratory Ltd, Knowledge Dock Business Centre, University Way, London, E16 2RD | Tel: 0208 223 3081