

Anti-GFP antibody (STJ501148)

STJ501148

GENERAL INFORMATION

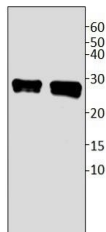
Product Type	Primary antibodies
Short Description	Rabbit polyclonal antibody anti-GFP is suitable for use in ELISA, Immunoprecipitation and Western Blot research applications.
Applications	ELISA, IP, WB
Host/Source	Rabbit
Reactivity	Human, Mouse, Rat

PRODUCT PROPERTIES

Clonality	Polyclonal
Clone ID	
Concentration	0.5-1.5 µg/µl
Conjugation	Unconjugated
Purification	Affinity Purified
Dilution Range	WB: 1:2, 500-1:5, 000 ELISA: 1:50, 000 IP: 1:200
Formulation	
Isotype	IgG
Storage Instruction	Store at -20°C for long term storage. Avoid freeze-thaw cycles.

TARGET INFORMATION

Gene ID	
Gene Symbol	
Uniprot ID	
Immunogen	Recombinant GFP protein.
Immunogen Region	
Specificity	
Immunogen Sequence	



Western blot with Anti-GFP Antibody (STJ501148) 1) 5 µl Recombinant GFP protein 2) 10 µl Recombinant GFP protein, 1:500 antibody dilution in buffer.