

Anti-GFAP antibody (50-100) (STJ501145)

STJ501145

GENERAL INFORMATION

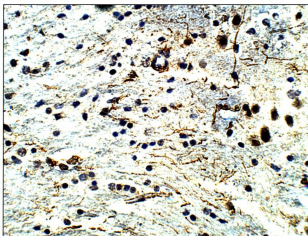
Product Type	Primary antibodies
Short Description	Rabbit polyclonal antibody anti-GFAP (50-100) is suitable for use in ELISA, Immunohistochemistry, Immunoprecipitation and Western Blot research applications.
Applications	ELISA, IHC, IP, WB
Host/Source	Rabbit
Reactivity	Human, Mouse, Rat

PRODUCT PROPERTIES

Clonality	Polyclonal
Clone ID	
Concentration	0.55-0.75 µg/µl
Conjugation	Unconjugated
Purification	Affinity Purified
Dilution Range	WB: 1:500 DB: 1:10, 000 ELISA: 1:10, 000 IP: 1:150 IHC: 1:100
Formulation	
Isotype	IgG
Storage	Store at -20°C for long term storage. Avoid freeze-thaw cycles.
Instruction	

TARGET INFORMATION

Gene ID	2670
Gene Symbol	GFAP
Uniprot ID	GFAP_HUMAN
Immunogen	Synthetic peptide taken within amino acid region 50-100 on human glial fibrillary acidic protein.
Immunogen Region	50-100
Specificity	
Immunogen Sequence	



Immunohistochemistry of mouse brain with Anti-GFAP primary antibody (STJ501145) at 1:100 dilution in Buffer. Section was treated with DAB and Haematoxylin stain. Magnification is at 40X.