

Anti-DDIT3 antibody (60-160) (STJ501130)

STJ501130

GENERAL INFORMATION

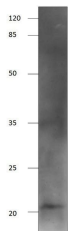
| | |
|--------------------------|--|
| Product Type | Primary antibodies |
| Short Description | Rabbit polyclonal antibody anti-DDIT3 (60-160) is suitable for use in ELISA, Immunoprecipitation and Western Blot research applications. |
| Applications | ELISA, IP, WB |
| Host/Source | Rabbit |
| Reactivity | Human, Mouse, Rat |

PRODUCT PROPERTIES

| | |
|----------------------------|---|
| Clonality | Polyclonal |
| Clone ID | |
| Concentration | 0.57-0.68 µg/µl |
| Conjugation | Unconjugated |
| Purification | Affinity Purified |
| Dilution Range | WB: 1:500 DB: 1:10, 000 ELISA: 1:10, 000 IP: 1:200 |
| Formulation | |
| Isotype | IgG |
| Storage Instruction | Store at -20°C for long term storage. Avoid freeze-thaw cycles. |

TARGET INFORMATION

| | |
|---------------------------|--|
| Gene ID | 1649 |
| Gene Symbol | DDIT3 |
| Uniprot ID | DDIT3_HUMAN |
| Immunogen | Synthetic peptide taken within amino acid region 60-160 on human GADD153 protein |
| Immunogen Region | 60-160 |
| Specificity | |
| Immunogen Sequence | |



Western blot with Anti-DDIT3 Antibody (STJ501130) and peptide. At 1:500 dilution in buffer on a 14% SDS gel.