

Anti-Glucose-6-Phosphate, catalytic subunit antibody (80-130) (STJ501115)

STJ501115

GENERAL INFORMATION

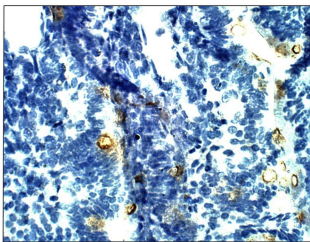
Product Type	Primary antibodies
Short Description	Rabbit polyclonal antibody anti-Glucose-6-Phosphate, catalytic subunit (80-130) is suitable for use in ELISA, Immunohistochemistry, Immunoprecipitation and Western Blot research applications.
Applications	ELISA, IHC, IP, WB
Host/Source	Rabbit
Reactivity	Human, Monkey, Mouse, Rat

PRODUCT PROPERTIES

Clonality	Polyclonal
Clone ID	
Concentration	0.55-0.65 µg/µl
Conjugation	Unconjugated
Purification	Affinity Purified
Dilution Range	WB: 1:500 ELISA: 1:10, 000 IP: 1:200
Formulation	
Isotype	IgG
Storage Instruction	Store at -20°C for long term storage. Avoid freeze-thaw cycles.

TARGET INFORMATION

Gene ID	14378
Gene Symbol	G6pc2
Uniprot ID	G6PC2_MOUSE
Immunogen	Synthetic peptide taken within amino acid region 80-130 on G6PC2 protein, and common in larger variant of glucose 6 phosphatase.
Immunogen Region	80-130
Specificity	
Immunogen Sequence	



Immunohistochemistry with Anti-Glucose-6-Phosphate, catalytic subunit Antibody (STJ501115) at 1:50 dilution in Buffer. DAB (brown) staining and Haematoxylin QS (blue) counterstain. 20X magnification. FFPE section.

This product is suitable for in-vitro studies under the RESEARCH USE ONLY [RUO] licence. This product must not be used as for diagnostic or other medical purposes.
St John's Laboratory Ltd, Knowledge Dock Business Centre, University Way, London, E16 2RD | Tel: 0208 223 3081