

Anti-FSH antibody (1-60) (STJ501088)

STJ501088

GENERAL INFORMATION

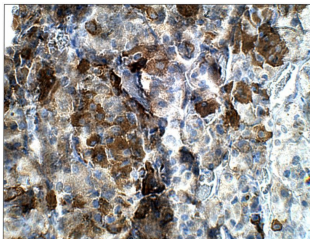
Product Type	Primary antibodies
Short Description	Rabbit polyclonal antibody anti-FSH (1-60) is suitable for use in Confocal Microscopy, ELISA, Immunofluorescence, Immunohistochemistry and Western Blot research applications.
Applications	CM, ELISA, IF, IHC, WB
Host/Source	Rabbit
Reactivity	Human, Mouse, Rat

PRODUCT PROPERTIES

Clonality	Polyclonal
Clone ID	
Concentration	0.71 µg/µl
Conjugation	Unconjugated
Purification	Affinity Purified
Dilution Range	WB: 1:500 DB: 1:50,000 ELISA: 1:50,000 IHC: 1:250 ICC: 1:250 IF: 1:250 CFM: 1:250
Formulation	
Isotype	IgG
Storage Instruction	Store at -20°C for long term storage. Avoid freeze-thaw cycles.

TARGET INFORMATION

Gene ID	
Gene Symbol	
Uniprot ID	
Immunogen	Synthetic peptide taken within amino acid region 1-60 on human FSH protein.
Immunogen Region	1-60
Specificity	
Immunogen Sequence	



Immunohistochemistry with Anti-FSH Antibody (STJ501088) at 1:50 dilution in Buffer. DAB (brown) staining and Haematoxylin QS (blue) counterstain. 40X (right) magnification. FFPE section.

This product is suitable for in-vitro studies under the RESEARCH USE ONLY [RUO] licence. This product must not be used as for diagnostic or other medical purposes.
St John's Laboratory Ltd, Knowledge Dock Business Centre, University Way, London, E16 2RD | Tel: 0208 223 3081