

## Anti-FPR1 antibody (150-200) (STJ501082)

STJ501082

### GENERAL INFORMATION

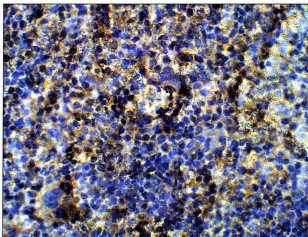
|                          |  |
|--------------------------|--|
| <b>Product Type</b>      | Primary antibodies   |
| <b>Short Description</b> | Rabbit polyclonal antibody anti-FPR1 (150-200) is suitable for use in ELISA, Immunohistochemistry, Immunoprecipitation and Western Blot research applications. |
| <b>Applications</b>      | ELISA, IHC, IP, WB   |
| <b>Host/Source</b>       | Rabbit   |
| <b>Reactivity</b>        | Human, Monkey, Mouse, Rat  |

### PRODUCT PROPERTIES

|                            |   |
|----------------------------|---|
| <b>Clonality</b>           | Polyclonal  |
| <b>Clone ID</b>            |   |
| <b>Concentration</b>       | 0.5 µg/µl   |
| <b>Conjugation</b>         | Unconjugated  |
| <b>Purification</b>        | Affinity Purified   |
| <b>Dilution Range</b>      | WB: 1:500<br>ELISA: 1:10,000<br>IP: 1:200<br>IHC: 1:100         |
| <b>Formulation</b>         |   |
| <b>Isotype</b>             | IgG   |
| <b>Storage Instruction</b> | Store at -20°C for long term storage. Avoid freeze-thaw cycles. |

### TARGET INFORMATION

|                           |  |
|---------------------------|--|
| <b>Gene ID</b>            | <a href="#">2357</a>   |
| <b>Gene Symbol</b>        | <a href="#">FPR1</a>   |
| <b>Uniprot ID</b>         | <a href="#">FPR1_HUMAN</a>   |
| <b>Immunogen</b>          | Synthetic peptide taken within amino acid region 150-200 on N-formyl peptide receptor. |
| <b>Immunogen Region</b>   | 150-200  |
| <b>Specificity</b>        |  |
| <b>Immunogen Sequence</b> |  |



Immunohistochemistry of rat spleen with Anti-FPR1 primary antibody (STJ501082) at 1:100 dilution in Buffer. Section was treated with DAB and Haematoxylin stain. Magnification is at 40X.