

Anti-C11orf1 antibody (229-250) (STJ501076)

STJ501076

GENERAL INFORMATION

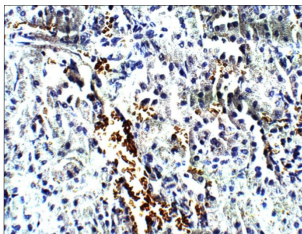
Product Type	Primary antibodies
Short Description	Rabbit polyclonal antibody anti-C11orf1 (229-250) is suitable for use in Confocal Microscopy, ELISA, Immunocytochemistry, Immunofluorescence, Immunohistochemistry, Immunoprecipitation and Western Blot research applications.
Applications	CM, ELISA, ICC, IF, IHC, IP, WB
Host/Source	Rabbit
Reactivity	Bovine, Cat, Human, Monkey, Mouse, Pig, Rat

PRODUCT PROPERTIES

Clonality	Polyclonal
Clone ID	
Concentration	0.7 µg/µl
Conjugation	Unconjugated
Purification	Affinity Purified
Dilution	WB: 1:500
Range	ELISA: 1:15, 000-1:20, 000 IP: 1:200 IHC: 1:100 ICC: 1:100 IF: 1:100
Formulation	
Isotype	IgG
Storage Instruction	Store at -20°C for long term storage. Avoid freeze-thaw cycles.

TARGET INFORMATION

Gene ID	64776
Gene Symbol	C11orf1
Uniprot ID	CK001_HUMAN
Immunogen	Synthetic peptide corresponding to amino acids 229-250 of Mouse Forkhead Box Protein 3 (winged helix transcription factor 3 protein). The peptide was post synthetically modified to achieve desired antigenicity before coupling to a carrier protein.
Immunogen Region	229-250
Specificity	
Immunogen Sequence	



Immunohistochemistry of rat kidney with Anti-C11orf1 primary antibody (STJ501076) at 1:100 dilution in Buffer. Section was treated with DAB and Haematoxylin stain. Magnification is at 20X.