

## Anti-FGFR2 antibody (520-570) (STJ501029)

STJ501029

### GENERAL INFORMATION

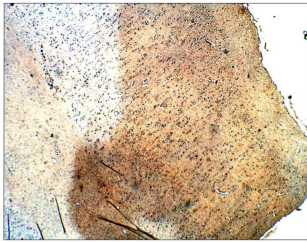
<b>Product Type</b>	Primary antibodies
<b>Short Description</b>	Rabbit polyclonal antibody anti-FGFR2 (520-570) is suitable for use in ELISA, Immunohistochemistry, Immunoprecipitation and Western Blot research applications.
<b>Applications</b>	ELISA, IHC, IP, WB
<b>Host/Source</b>	Rabbit
<b>Reactivity</b>	Cat, Human, Monkey

### PRODUCT PROPERTIES

<b>Clonality</b>	Polyclonal
<b>Clone ID</b>	
<b>Concentration</b>	0.55-0.75 µg/µl
<b>Conjugation</b>	Unconjugated
<b>Purification</b>	Affinity Purified
<b>Dilution Range</b>	WB: 1:500 ELISA: 1:10,000 IP: 1:150 IHC: 1:50-1:100
<b>Formulation</b>	
<b>Isotype</b>	IgG
<b>Storage Instruction</b>	Store at -20°C for long term storage. Avoid freeze-thaw cycles.

### TARGET INFORMATION

<b>Gene ID</b>	<a href="#">2263</a>
<b>Gene Symbol</b>	<a href="#">FGFR2</a>
<b>Uniprot ID</b>	<a href="#">FGFR2_HUMAN</a>
<b>Immunogen</b>	Synthetic peptide taken within amino acid region 520-570 on human Fibroblast Growth Factor receptor 2 isoform X6 protein.
<b>Immunogen Region</b>	520-570
<b>Specificity</b>	
<b>Immunogen Sequence</b>	



Immunohistochemistry of baboon brain with Anti-FGFR2 primary antibody (STJ501029) at 1:50 dilution in Buffer. Section was treated with DAB and Haematoxylin stain.