

Anti-FGD3 antibody (250-320) (STJ501023)

STJ501023

GENERAL INFORMATION

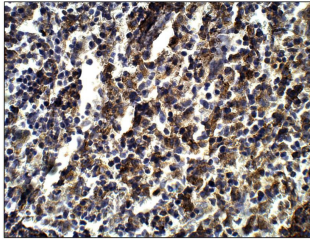
Product Type	Primary antibodies
Short Description	Rabbit polyclonal antibody anti-FGD3 (250-320) is suitable for use in ELISA, Immunoprecipitation and Western Blot research applications.
Applications	ELISA, IP, WB
Host/Source	Rabbit
Reactivity	Human, Mouse, Rat

PRODUCT PROPERTIES

Clonality	Polyclonal
Clone ID	
Concentration	0.5-1.5 µg/µl
Conjugation	Unconjugated
Purification	Affinity Purified
Dilution Range	WB: 1:2, 500-1:5, 000 ELISA: 1:50, 000 IP: 1:200 IHC: 1:50-1:150
Formulation	
Isotype	IgG
Storage Instruction	Store at -20°C for long term storage. Avoid freeze-thaw cycles.

TARGET INFORMATION

Gene ID	89846
Gene Symbol	FGD3
Uniprot ID	FGD3_HUMAN
Immunogen	Synthetic peptide taken within amino acid region 250-320 on human FYVE, RhoGEF and PH domain-containing protein 3.
Immunogen Region	250-320
Specificity	
Immunogen Sequence	



Immunohistochemistry of rat spleen with Anti-FGD3 primary antibody (STJ501023) at 1:50 dilution in Buffer. Section was treated with DAB and Haematoxylin stain. Magnification is at 40X.