

## Anti-FBXW4 antibody (240-290) (STJ500990)

STJ500990

### GENERAL INFORMATION

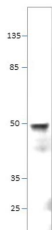
<b>Product Type</b>	Primary antibodies
<b>Short Description</b>	Rabbit polyclonal antibody anti-FBXW4 (240-290) is suitable for use in Dot Blot, ELISA, Immunoprecipitation and Western Blot research applications.
<b>Applications</b>	DB, ELISA, IP, WB
<b>Host/Source</b>	Rabbit
<b>Reactivity</b>	Human, Monkey, Mouse, Rat

### PRODUCT PROPERTIES

<b>Clonality</b>	Polyclonal
<b>Clone ID</b>	
<b>Concentration</b>	0.68-0.7 µg/µl
<b>Conjugation</b>	Unconjugated
<b>Purification</b>	Affinity Purified
<b>Dilution Range</b>	WB: 1:500 DB: 1:4, 000 ELISA: 1:4, 000 IP: 1:150
<b>Formulation</b>	
<b>Isotype</b>	IgG
<b>Storage Instruction</b>	Store at -20°C for long term storage. Avoid freeze-thaw cycles.

### TARGET INFORMATION

<b>Gene ID</b>	6468
<b>Gene Symbol</b>	FBXW4
<b>Uniprot ID</b>	FBXW4_HUMAN
<b>Immunogen</b>	Synthetic peptide taken within amino acid region 240-290 on human FBX4 protein.
<b>Immunogen Region</b>	240-290
<b>Specificity</b>	
<b>Immunogen Sequence</b>	



Western blot with Anti-FBXW4 Antibody (STJ500990) of mouse muscle at 1:500 dilution in buffer.