

Anti-PIEZO1 antibody (STJ500987)

STJ500987

GENERAL INFORMATION

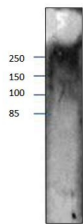
Product Type	Primary antibodies
Short Description	Rabbit polyclonal antibody anti-PIEZO1 is suitable for use in ELISA, Immunoprecipitation and Western Blot research applications.
Applications	ELISA, IP, WB
Host/Source	Rabbit
Reactivity	Human

PRODUCT PROPERTIES

Clonality	Polyclonal
Clone ID	
Concentration	0.5 µg/µl
Conjugation	Unconjugated
Purification	Affinity Purified
Dilution Range	WB: 1:500 DB: 1:10, 000 ELISA: 1:10, 000 IP: 1:200
Formulation	
Isotype	IgG
Storage Instruction	Store at -20°C for long term storage. Avoid freeze-thaw cycles.

TARGET INFORMATION

Gene ID	9780
Gene Symbol	PIEZO1
Uniprot ID	PIEZ1_HUMAN
Immunogen	Synthetic peptide taken between TMD14 and TMD15 on human FAM38A protein.
Immunogen Region	
Specificity	
Immunogen Sequence	



Western blot with Anti-PIEZO1 Antibody (STJ500987) with peptide on at 1:500 dilution in buffer.