

Anti-WFDC2 antibody (70-120) (STJ500961)

STJ500961

GENERAL INFORMATION

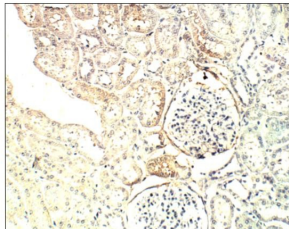
Product Type	Primary antibodies
Short Description	Rabbit polyclonal antibody anti-WFDC2 (70-120) is suitable for use in ELISA, Immunohistochemistry, Immunoprecipitation and Western Blot research applications.
Applications	ELISA, IHC, IP, WB
Host/Source	Rabbit
Reactivity	Human, Monkey

PRODUCT PROPERTIES

Clonality	Polyclonal
Clone ID	
Concentration	0.68 µg/µl
Conjugation	Unconjugated
Purification	Affinity Purified
Dilution Range	WB: 1:500-1:750 DB: 1:20, 000 ELISA: 1:20, 000 IP: 1:200 IHC: 1:200
Formulation	
Isotype	IgG
Storage	Store at -20°C for long term storage. Avoid freeze-thaw cycles.
Instruction	

TARGET INFORMATION

Gene ID	10406
Gene Symbol	WFDC2
Uniprot ID	WFDC2_HUMAN
Immunogen	Synthetic peptide taken within amino acid region 70-120 on human WAP four-disulfide core domain protein 2.
Immunogen Region	70-120
Specificity	
Immunogen Sequence	



Immunohistochemistry of baboon kidney with Anti-WFDC2 primary antibody (STJ500961) at 1:100 dilution in Buffer. Section was treated with DAB and Haematoxylin stain. Magnification is at 20X.

This product is suitable for in-vitro studies under the RESEARCH USE ONLY [RUO] licence. This product must not be used as for diagnostic or other medical purposes.
St John's Laboratory Ltd, Knowledge Dock Business Centre, University Way, London, E16 2RD | Tel: 0208 223 3081