

Anti-ERG antibody (400-450) (STJ500948)

STJ500948

GENERAL INFORMATION

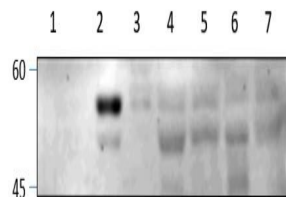
| | |
|--------------------------|---|
| Product Type | Primary antibodies |
| Short Description | Rabbit polyclonal antibody anti-ERG (400-450) is suitable for use in ELISA, Immunoprecipitation and Western Blot research applications. |
| Applications | ELISA, IP, WB |
| Host/Source | Rabbit |
| Reactivity | Human, Mouse, Rat |

PRODUCT PROPERTIES

| | |
|----------------------------|---|
| Clonality | Polyclonal |
| Clone ID | |
| Concentration | 0.55-0.75 µg/µl |
| Conjugation | Unconjugated |
| Purification | Affinity Purified |
| Dilution Range | WB: 1:500 DB: 1:10, 000 ELISA: 1:10, 000 IP: 1:200 |
| Formulation | |
| Isotype | IgG |
| Storage Instruction | Store at -20°C for long term storage. Avoid freeze-thaw cycles. |

TARGET INFORMATION

| | |
|---------------------------|--|
| Gene ID | 2078 |
| Gene Symbol | ERG |
| Uniprot ID | ERG_HUMAN |
| Immunogen | Synthetic peptide taken within amino acid region 400-450 on human Transcriptional regulator ERG protein. |
| Immunogen Region | 400-450 |
| Specificity | This is a Pan ERG antibody and will label isoforms 1, 2, 3, and 4. |
| Immunogen Sequence | |



Western blot with Anti-ERG Antibody (STJ500948) on rat tissues: Spleen, Testis, Ovary, Mid brain, Cerebellum, Spinal cord and Cerebral cortex, at 1:250 dilution in buffer.

This product is suitable for in-vitro studies under the RESEARCH USE ONLY [RUO] licence. This product must not be used as for diagnostic or other medical purposes.
 St John's Laboratory Ltd, Knowledge Dock Business Centre, University Way, London, E16 2RD | Tel: 0208 223 3081