

Anti-Ephrin Receptor B1 antibody (850-900) (STJ500930)

STJ500930

GENERAL INFORMATION

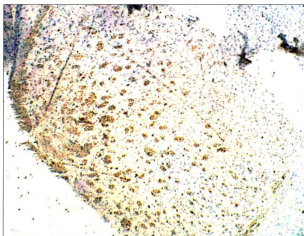
Product Type	Primary antibodies
Short Description	Rabbit polyclonal antibody anti-Ephrin Receptor B1 (850-900) is suitable for use in ELISA, Immunohistochemistry, Immunoprecipitation and Western Blot research applications.
Applications	ELISA, IHC, IP, WB
Host/Source	Rabbit
Reactivity	Human, Mouse, Rat

PRODUCT PROPERTIES

Clonality	Polyclonal
Clone ID	
Concentration	0.58 µg/µl
Conjugation	Unconjugated
Purification	Affinity Purified
Dilution Range	WB: 1:750 DB: 1:10, 000 ELISA: 1:10, 000 IP: 1:200 IHC: 1:100
Formulation	
Isotype	IgG
Storage	Store at -20°C for long term storage. Avoid freeze-thaw cycles.
Instruction	

TARGET INFORMATION

Gene ID	270190
Gene Symbol	Ephb1
Uniprot ID	EPHB1_MOUSE
Immunogen	Synthetic peptide taken within amino acid region 850-900 on mouse Eph BR1 protein.
Immunogen Region	850-900
Specificity	
Immunogen Sequence	



Immunohistochemistry of mouse brain with Anti-Ephrin Receptor B1 primary antibody (STJ500930) at 1:100 dilution in Buffer. Section was treated with DAB and Haematoxylin stain. Magnification is at 10X.