

Anti-Ephrin Receptor A4 antibody (550-650) (STJ500915)

STJ500915

GENERAL INFORMATION

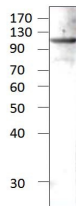
Product Type	Primary antibodies
Short Description	Rabbit polyclonal antibody anti-Ephrin Receptor A4 (550-650) is suitable for use in ELISA and Western Blot research applications.
Applications	ELISA, WB
Host/Source	Rabbit
Reactivity	Human, Mouse

PRODUCT PROPERTIES

Clonality	Polyclonal
Clone ID	
Concentration	0.55-0.75 µg/µl
Conjugation	Unconjugated
Purification	Affinity Purified
Dilution Range	WB: 1:500 DB: 1:10, 000 ELISA: 1:10, 000
Formulation	
Isotype	IgG
Storage Instruction	Store at -20°C for long term storage. Avoid freeze-thaw cycles.

TARGET INFORMATION

Gene ID	13838
Gene Symbol	Epha4
Uniprot ID	EPHA4_MOUSE
Immunogen	Synthetic peptide taken within amino acid region 550-650 on human EphA R4 protein.
Immunogen Region	550-650
Specificity	
Immunogen Sequence	



Western blot with Anti-Ephrin Receptor A4 Antibody (STJ500915) of SKNMC cell at 1:500 dilution in buffer.

This product is suitable for in-vitro studies under the RESEARCH USE ONLY [RUO] licence. This product must not be used as for diagnostic or other medical purposes.
St John's Laboratory Ltd, Knowledge Dock Business Centre, University Way, London, E16 2RD | Tel: 0208 223 3081