

Anti-SLC29A3 antibody (1-60) (STJ500885)

STJ500885

GENERAL INFORMATION

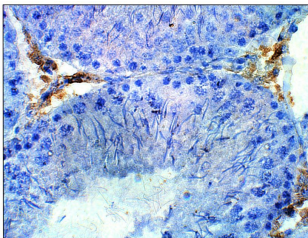
Product Type	Primary antibodies
Short Description	Rabbit polyclonal antibody anti-SLC29A3 (1-60) is suitable for use in ELISA, Immunohistochemistry, Immunoprecipitation and Western Blot research applications.
Applications	ELISA, IHC, IP, WB
Host/Source	Rabbit
Reactivity	Bovine, Human, Monkey, Mouse, Rat

PRODUCT PROPERTIES

Clonality	Polyclonal
Clone ID	
Concentration	0.61 µg/µl
Conjugation	Unconjugated
Purification	Affinity Purified
Dilution Range	WB: 1:500 DB: 1:10, 000 ELISA: 1:10, 000
Formulation	
Isotype	IgG
Storage	Store at -20°C for long term storage. Avoid freeze-thaw cycles.
Instruction	

TARGET INFORMATION

Gene ID	55315
Gene Symbol	SLC29A3
Uniprot ID	S29A3_HUMAN
Immunogen	Synthetic peptide taken within amino acid region 1-60 on ENT3 protein.
Immunogen Region	1-60
Specificity	
Immunogen Sequence	



Immunohistochemistry of rat tissue with Anti-SLC29A3 primary antibody (STJ500885) at 1:50 dilution in Buffer. Section was treated with DAB and Haematoxylin stain. Magnification is at 40X.