

Anti-ENT1 antibody (410-460) (STJ500882)

STJ500882

GENERAL INFORMATION

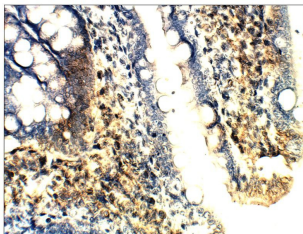
Product Type	Primary antibodies
Short Description	Rabbit polyclonal antibody anti-ENT1 (410-460) is suitable for use in ELISA, Immunohistochemistry, Immunoprecipitation and Western Blot research applications.
Applications	ELISA, IHC, IP, WB
Host/Source	Rabbit
Reactivity	Mouse, Rat

PRODUCT PROPERTIES

Clonality	Polyclonal
Clone ID	
Concentration	0.5 µg/µl
Conjugation	Unconjugated
Purification	Affinity Purified
Dilution Range	WB: 1:500 ELISA: 1:10, 000 IP: 1:200 IHC: 1:100
Formulation	
Isotype	IgG
Storage Instruction	Store at -20°C for long term storage. Avoid freeze-thaw cycles.

TARGET INFORMATION

Gene ID	63959
Gene Symbol	Slc29a1
Uniprot ID	S29A1_MOUSE
Immunogen	Synthetic peptide taken within amino acid region 410-460 on mouse Equilibrative nitrobenzylthioinosine-sensitive nucleoside transporter ENT1 protein.
Immunogen Region	410-460
Specificity	
Immunogen Sequence	



Immunohistochemistry of rat small intestine with Anti-ENT1 primary antibody (STJ500882) at 1:100 dilution in Buffer. Section was treated with DAB and Haematoxylin stain. Magnification is at 40X.

This product is suitable for in-vitro studies under the RESEARCH USE ONLY [RUO] licence. This product must not be used as for diagnostic or other medical purposes.
St John's Laboratory Ltd, Knowledge Dock Business Centre, University Way, London, E16 2RD | Tel: 0208 223 3081