

Anti-ELOVL4 antibody (107-121) (STJ500876)

STJ500876

GENERAL INFORMATION

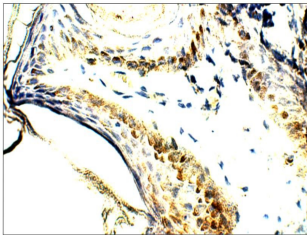
Product Type	Primary antibodies
Short Description	Rabbit polyclonal antibody anti-ELOVL4 (107-121) is suitable for use in ELISA, Immunohistochemistry, Immunoprecipitation and Western Blot research applications.
Applications	ELISA, IHC, IP, WB
Host/Source	Rabbit
Reactivity	Human, Mouse, Rat

PRODUCT PROPERTIES

Clonality	Polyclonal
Clone ID	
Concentration	0.68 µg/µl
Conjugation	Unconjugated
Purification	Affinity Purified
Dilution Range	WB: 1:500 IP: 1:200 IHC: 1:100
Formulation	
Isotype	IgG
Storage Instruction	Store at -20°C for long term storage. Avoid freeze-thaw cycles.

TARGET INFORMATION

Gene ID	6785
Gene Symbol	ELOVL4
Uniprot ID	ELOV4_HUMAN
Immunogen	Synthetic peptide corresponding to internal sequence amino acids 107-121 of Human ELOVL4.
Immunogen Region	107-121
Specificity	
Immunogen Sequence	



Immunohistochemistry of human tissue with Anti-ELOVL4 primary antibody (STJ500876) at 1:100 dilution in Buffer. Section was treated with DAB and Haematoxylin stain. Magnification is at 40X.