

## Anti-ELOVL1 antibody (148-198) (STJ500870)

STJ500870

### GENERAL INFORMATION

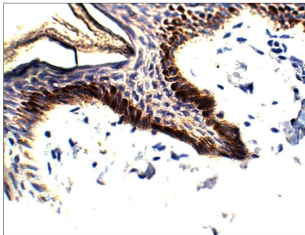
<b>Product Type</b>	Primary antibodies
<b>Short Description</b>	Rabbit polyclonal antibody anti-ELOVL1 (148-198) is suitable for use in ELISA, Immunohistochemistry, Immunoprecipitation and Western Blot research applications.
<b>Applications</b>	ELISA, IHC, IP, WB
<b>Host/Source</b>	Rabbit
<b>Reactivity</b>	Human, Monkey, Mouse

### PRODUCT PROPERTIES

<b>Clonality</b>	Polyclonal
<b>Clone ID</b>	
<b>Concentration</b>	0.5 µg/µl
<b>Conjugation</b>	Unconjugated
<b>Purification</b>	Affinity Purified
<b>Dilution Range</b>	WB: 1:500 ELISA: 1:10, 000 IP: 1:200 IHC: 1:100
<b>Formulation</b>	
<b>Isotype</b>	IgG
<b>Storage Instruction</b>	Store at -20°C for long term storage. Avoid freeze-thaw cycles.

### TARGET INFORMATION

<b>Gene ID</b>	64834
<b>Gene Symbol</b>	ELOVL1
<b>Uniprot ID</b>	ELOV1_HUMAN
<b>Immunogen</b>	Synthetic peptide taken within amino acid region 148-198 on human Elongation of very long chain fatty acids protein 1.
<b>Immunogen Region</b>	148-198
<b>Specificity</b>	
<b>Immunogen Sequence</b>	



Immunohistochemistry of human tissue with Anti-ELOVL1 primary antibody (STJ500870) at 1:100 dilution in Buffer. Section was treated with DAB and Haematoxylin stain. Magnification is at 40X.