

Anti-EHD4 antibody (420-450) (STJ500858)

STJ500858

GENERAL INFORMATION

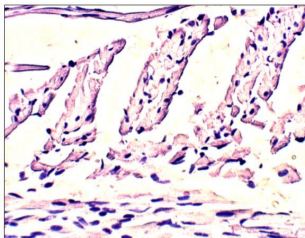
Product Type	Primary antibodies
Short Description	Rabbit polyclonal antibody anti-EHD4 (420-450) is suitable for use in ELISA, Immunohistochemistry, Immunoprecipitation and Western Blot research applications.
Applications	ELISA, IHC, IP, WB
Host/Source	Rabbit
Reactivity	Human, Mouse, Rat

PRODUCT PROPERTIES

Clonality	Polyclonal
Clone ID	
Concentration	0.55 µg/µl
Conjugation	Unconjugated
Purification	Affinity Purified
Dilution Range	WB: 1:500 DB: 1:10, 000 ELISA: 1:10, 000 IP: 1:200 IHC: 1:100
Formulation	
Isotype	IgG
Storage	Store at -20°C for long term storage. Avoid freeze-thaw cycles.
Instruction	

TARGET INFORMATION

Gene ID	30844
Gene Symbol	EHD4
Uniprot ID	EHD4_HUMAN
Immunogen	Synthetic peptide taken within amino acid region 420-450 on EH-domain containing 4 protein.
Immunogen Region	420-450
Specificity	
Immunogen Sequence	



Immunohistochemistry of rat tissue with Anti-EHD4 primary antibody (STJ500858) at 1:100 dilution in Buffer. Section was treated with DAB and Haematoxylin stain.