

Anti-EHD3 antibody (475-535) (STJ500855)

STJ500855

GENERAL INFORMATION

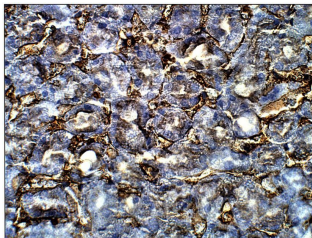
Product Type	Primary antibodies
Short Description	Rabbit polyclonal antibody anti-EHD3 (475-535) is suitable for use in ELISA, Immunohistochemistry, Immunoprecipitation and Western Blot research applications.
Applications	ELISA, IHC, IP, WB
Host/Source	Rabbit
Reactivity	Human, Mouse, Rat

PRODUCT PROPERTIES

Clonality	Polyclonal
Clone ID	
Concentration	0.58 µg/µl
Conjugation	Unconjugated
Purification	Affinity Purified
Dilution Range	WB: 1:500 DB: 1:10, 000 ELISA: 1:10, 000 IP: 1:200 IHC: 1:50-1:150
Formulation	
Isotype	IgG
Storage	Store at -20°C for long term storage. Avoid freeze-thaw cycles.
Instruction	

TARGET INFORMATION

Gene ID	30845
Gene Symbol	EHD3
Uniprot ID	EHD3_HUMAN
Immunogen	Synthetic peptide taken within amino acid region 475-535 on human EH-domain containing protein 3.
Immunogen Region	475-535
Specificity	
Immunogen Sequence	



Immunohistochemistry of mouse kidney with Anti-EHD3 primary antibody (STJ500855) at 1:50 dilution in Buffer. Section was treated with DAB and Haematoxylin stain. Magnification is at 40x.