

Anti-EFEMP1 antibody (25-42) (STJ500846)

STJ500846

GENERAL INFORMATION

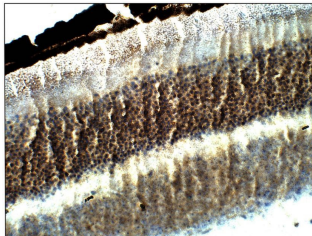
| | |
|--------------------------|--|
| Product Type | Primary antibodies |
| Short Description | Rabbit polyclonal antibody anti-EFEMP1 (25-42) is suitable for use in ELISA, Immunohistochemistry, Immunoprecipitation and Western Blot research applications. |
| Applications | ELISA, IHC, IP, WB |
| Host/Source | Rabbit |
| Reactivity | Human, Monkey, Mouse, Rat |

PRODUCT PROPERTIES

| | |
|-----------------------|---|
| Clonality | Polyclonal |
| Clone ID | |
| Concentration | 0.65 µg/µl |
| Conjugation | Unconjugated |
| Purification | Affinity Purified |
| Dilution Range | WB: 1:500 DB: 1:10, 000 ELISA: 1:10, 000 IP: 1:200 IHC: 1:100 |
| Formulation | |
| Isotype | IgG |
| Storage | Store at -20°C for long term storage. Avoid freeze-thaw cycles. |
| Instruction | |

TARGET INFORMATION

| | |
|---------------------------|--|
| Gene ID | |
| Gene Symbol | |
| Uniprot ID | |
| Immunogen | Synthetic cyclic peptide corresponding to N terminal amino acids 25-42 of Human EFEMP1, peptide was covalently modified. |
| Immunogen Region | 25-42 |
| Specificity | |
| Immunogen Sequence | |



Immunohistochemistry of mouse tissue with Anti-EFEMP1 primary antibody (STJ500846) at 1:50 dilution in Buffer. Section was treated with DAB and Haematoxylin stain. Magnification is at 40X.