

Anti-E2F4 antibody (360-410) (STJ500825)

STJ500825

GENERAL INFORMATION

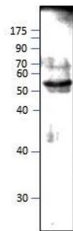
Product Type	Primary antibodies
Short Description	Rabbit polyclonal antibody anti-E2F4 (360-410) is suitable for use in ELISA, Immunoprecipitation and Western Blot research applications.
Applications	ELISA, IP, WB
Host/Source	Rabbit
Reactivity	Human, Mouse, Rat

PRODUCT PROPERTIES

Clonality	Polyclonal
Clone ID	
Concentration	0.78-0.89 µg/µl
Conjugation	Unconjugated
Purification	Affinity Purified
Dilution Range	WB: 1:500 DB: 1:10, 000 ELISA: 1:10, 000 IP: 1:200
Formulation	
Isotype	IgG
Storage Instruction	Store at -20°C for long term storage. Avoid freeze-thaw cycles.

TARGET INFORMATION

Gene ID	104394
Gene Symbol	E2f4
Uniprot ID	E2F4_MOUSE
Immunogen	Synthetic peptide taken within amino acid region 360-410 on mouse E2F4 protein.
Immunogen Region	360-410
Specificity	
Immunogen Sequence	



Western blot with Anti-E2F4 Antibody (STJ500825) at 1:500 dilution in buffer.