

## Anti-E2F2 antibody (70-120) (STJ500819)

STJ500819

### GENERAL INFORMATION

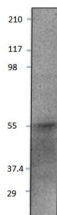
<b>Product Type</b>	Primary antibodies
<b>Short Description</b>	Rabbit polyclonal antibody anti-E2F2 (70-120) is suitable for use in ELISA and Western Blot research applications.
<b>Applications</b>	ELISA, WB
<b>Host/Source</b>	Rabbit
<b>Reactivity</b>	Human, Mouse, Rat

### PRODUCT PROPERTIES

<b>Clonality</b>	Polyclonal
<b>Clone ID</b>	
<b>Concentration</b>	0.75-1.25 µg/µl
<b>Conjugation</b>	Unconjugated
<b>Purification</b>	Affinity Purified
<b>Dilution Range</b>	WB: 1:500 DB: 1:10, 000 ELISA: 1:10, 000
<b>Formulation</b>	
<b>Isotype</b>	IgG
<b>Storage Instruction</b>	Store at -20°C for long term storage. Avoid freeze-thaw cycles.

### TARGET INFORMATION

<b>Gene ID</b>	<a href="#">242705</a>
<b>Gene Symbol</b>	<a href="#">E2f2</a>
<b>Uniprot ID</b>	<a href="#">E2F2_MOUSE</a>
<b>Immunogen</b>	Synthetic peptide taken within amino acid region 70-120 on E2F2 protein.
<b>Immunogen Region</b>	70-120
<b>Specificity</b>	
<b>Immunogen Sequence</b>	



Western blot with Anti-E2F2 Antibody (STJ500819) with peptide on at 1:500 dilution in buffer.